



Integrated System Diagnostics

NEWSLINE

February 2007

Volume 1, Number 1

In This Issue

- Welcome to Integrated System Diagnostics
- CEO Corner
- Public Training Calendar 2007
- Introducing Appraisal Wizard V7

Welcome to Integrated System Diagnostics

Businesses today must remain competitive while demonstrating compliance with a growing number of laws and standards. To realize your business objectives, you need a systematic approach to process definition, adherence, and improvement.

ISD guides organizations in charting and navigating a low-risk, efficient course to process improvement. We bring unparalleled expertise in the implementation of CMMI® and other industry-standard models. Our expertise is augmented by our

extensive library of process assets, which allow us to deliver cost-effective customer-tailored services. Our training, consulting and appraisals enable our clients in establishing the infrastructure they need to optimize processes, accomplish goals, and move forward on their own. Our industry-leading software multiplies returns on your investments in process improvement, making process development, alignment, and audit more tractable, more consistent, and more readily reusable.

CEO's Corner

Welcome to Integrated System Diagnostics and the inaugural edition of *Newsline*, our new quarterly newsletter. Through this publication, we hope to better communicate news of interest to our customers and friends on topics featuring ISD partners and customers, new products and services, and important industry trends.

ISD has some exciting announcements to make:

- There has been a broad restructuring of ISD's U.S. Operations. Our purpose is to better meet domestic CMMI® market needs and concentrate on new product and service R&D in the U.S., while expanding service delivery capability in Latin/South America, Europe, and Asia. In future editions of *Newsline*, we

will be introducing you to our key business partners in these global markets.

- Paul Byrnes, our VP and Chief Technology Officer, has been selected by the Software Engineering Institute and his fellow Lead Appraisers to participate in the development of a SCAMPI Lead Appraiser Body of Knowledge (BoK) for future SCAMPI Certification purposes. Paul has also been elected to the SCAMPI Lead Appraiser Body of Knowledge Advisory Board. As many of you already know, Paul is recognized for his work in method development, leading high maturity appraisals, and designing ISD's approach to global enterprise appraisals. We are very pleased to

Contact Us

ISD Headquarters USA
889 Shore Road
Pocasset, MA 02559
Phone: 866-977-6237
Fax: 508-564-5114
E-mail: info@isd-inc.com

(continued on page 2)

continue our 14-year track record of citizenship initiatives with the SEI and the Appraiser community.

- Both Paul Byrnes and Jackie Lawrence, ISD's Training Product Line Director, have successfully passed the SCAMPI High Maturity Lead Appraiser Certification oral exams. Our congratulations to them on this important achievement.
- We have exciting news about new ISD products and services to report. We are pleased to announce the successful release of Appraisal Wizard V7™ during Q4 2006. New product and upgrade sales have affirmed our belief that an enterprise tool solution to managing process improvement, appraisal complexity, and model compliance is a critical success factor for many organizations. Look for significant improvements in performance, look and feel, planning functions, and other new features. Congratulations to Mike Simmons, VP Software Products, for a stellar job on producing this major release. See the article on page 4.
- We have also extended our distribution network for Appraisal Wizard® and Model Wizard™ through our recently announced Value Added Reseller agreement

ISD is excited to announce our first computer-based training for Appraisal Wizard. Contact us today to see how you can get a copy.

with the Systems and Software Consortium, Inc. The SSCI version of the product features extensions to Appraisal Wizard designed to meet the multi-model and model mapping needs of their member companies.

- ISD Brasil, in concert with the PUC-RS University, is extending the range of applications for Appraisal Wizard®, through development of the Integrated System Framework™. ISF is

a metamodel for managing enterprise compliance to most common industry standards and models such as CMMI®, ITIL™, CobiT™, and others. Look for other Appraisal Wizard application announcements soon!

Stay tuned for future reports from ISD about e-Sourcing Capability Model training (eSCM) and evaluation capabilities and ISD's Affiliated Consultant VAR program development initiative.

See you at SEPG!! Come by booth 321 and say hello.

*Joseph Morin
President and CEO
Integrated System Diagnostics, Inc.*

CMM, CMMI, People CMM, and Capability Maturity Model are registered by SEI in the U.S. Patent and Trademark Office.

CobiT is intellectual property and trademark of ISACA.

ITIL is intellectual property and trademark of OGC.

Integrated System Framework for Excellence (ISD for Excellence) is intellectual property of ISD, Inc. and is registered as a trademark of ISD Brasil.

eSCM is intellectual property of Carnegie Mellon University.

Appraisal Wizard, Model Wizard, and Model Mapper are intellectual property and trademarks of ISD, Inc.



**Upgrade to Appraisal Wizard Version7
at upgrade@isd-inc.com.**

**To participate in a webex session, contact ISD
at webex@isd-inc.com.**

Public Training Calendar 2007

To successfully navigate process improvement, you need an orientation to the available approaches and an awareness of the associated hazards. ISD's Education services inform you and other key stakeholders in your organization of the opportunities to realize improved business performance through model-based process improvement. We help you identify the issues that can drive up cost and pose significant risk. We further train your people in the concepts and techniques required to lead and staff model-based process improvement efforts that will meet your goals, achieve required compliance and maximize return on your investment.

ISD has developed a comprehensive curriculum featuring Seminars and Training Courses targeted to meet your needs, whether you're a senior executive or a practitioner.

Our instructors' expertise in model-based process improvement helps you understand the models and methods; their diverse backgrounds in project and engineering management help you make that understanding relevant and applicable in your organizational context.

ISD's Training Courses are offered on-site, at the Melbourne Education Center and at other venues across the United States. We are licensed to deliver the SEI's Introduction to CMMI and SCAMPI Team Member Training as well as CMU's eSCM-SP Model Training. Our Appraisal Method Training (AMT) is offered publicly and can be readily tailored to your needs.

Need to hone your technical skills while actually developing your process infrastructure? ISD's Workshops provide customer-specific, hands-on guidance in a variety of topic areas.

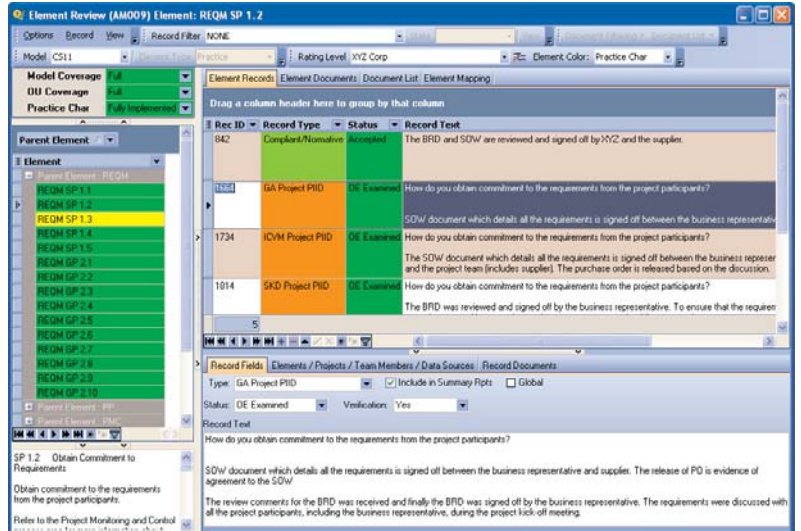
2007 Public Training Schedule

Date	Course	Location
Mar 13, 2007	Intro to CMMI V1.2	Los Angeles, CA
Mar 21, 2007	Intro to CMMI V1.2	Austin, TX
Apr 10, 2007	Intro to CMMI V1.2	Melbourne FL
Apr 16, 2007	Appraisal Wizard Seminar	Washington DC
Apr 17, 2007	Appraisal Method Training	Washington DC
Apr 24, 2007	Intro to CMMI V1.2	Washington DC
May 8, 2007	Intro to eSCM-SP	Washington DC
May 22, 2007	Intro to CMMI V1.2	Melbourne FL
Jun 12, 2007	Intro to CMMI V1.2	Providence RI
Jun 18, 2007	Appraisal Wizard Seminar	Providence RI
Jun 19, 2007	Appraisal Method Training	Providence RI
Jun 26, 2007	Intro to CMMI V1.2	Melbourne FL

INTRODUCING APPRAISAL WIZARD® VERSION 7 IMPROVING AN ALREADY POWERFUL TOOL

Appraisal Wizard® Version 7.0 delivers advanced and improved functionality to those responsible for all enterprise process compliance management activities. In this latest version, we continue to improve the accessibility of objective evidence and other data required to successfully complete many types of process compliance audits and appraisals. Standardized process activities through automation improves efficiency and reduces risk to your appraisal.

Responding to user feedback, ISD has added new features and enhanced existing ones that improve overall compliance management and typical appraisal activities. Features in the tool support each phase—plan, prepare, conduct, and report—of most process appraisal methods. ISD has improved support for the Standard CMMI Appraisal Method for Process Improvement (SCAMPI) by adding additional features and calculated ratings based on available objective evidence. User interface changes and security features were added to significantly better support the user.



The enhanced user interface includes new powerful data grid features such as standardized navigation bars, data sorting, data grouping, data filtering, and summarization.

APPRAISAL WIZARD® V7 Enhancements Include:

- Enhanced user interface—New powerful data grid features, user-tailorable “look and feel” settings, and an improved menu system
- SCAMPI support suite—Includes new calculations and user interface
- New objective evidence relationship—Directly connect documents to model elements
- Robust filtering capability—Multiple data filtering mechanisms for defining views and summarizing information
- New planning features—Includes a new intuitive calendar schedule interface with improved mechanism to manage planned activities
- Metrics, reporting, and graphing—Graph and view appraisal records by type or occurrence against model elements to reflect status; Track, manage, report, and graph planned versus actual activities
- Operating settings—Document usage of appraisal settings; New settings available to track status of objective evidence and categorize planned versus actual activities
- Performance enhancements—See a 90% reduction in network data traffic in many key application functions, improving response time
- Additional appraisal data utilities— Comprehensive search/replace feature and spellchecking
- Enhanced element review window—Provides faster and easier data entry, manipulation, and filtering